

Government's Hydro Power Projects



August 2015

GOL's Hydropower Projects

1. PHONGSALY:

- Khua
- Samphanh
- May

2. Louangnamtha:

- Nalae
- Long
- Viengphoukha

3. Oudomxay:

- Nga
- Namor
- Pakbeng
- Hoon
- Beng
- Xay

4. Houaphan:

- Xiengkhor
- Xamneua
- Xamtay
- Viengthong

- Viengxay
- Huameuang

5. Xiangkhouang:

- Khoun
- Thathom
- Mork

6. Luang Prabang:

- Chomphet
- Nambak

- Pak xeng

- Phoukhoun
- Viengkham
- Phonxay

7. Savannakhet:

- Thapangthong
- Nong
- Phin
- Sepon

8. Salavan:

- Samuoi
- Ta oi
- Toomlarn

9. Xekong:

- Kaleum
- Dakcheung
- Lamarm

10. Attapeu:

- Sanxay
- Phouvong

Phongsaly Province

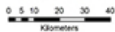


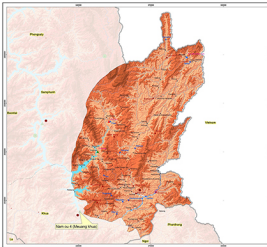
GOI's Hydropower Project

Legend

- **Thaiphaly**
Main city
- Country boundary
- Province boundary
- District boundary
- City/District/Province that it's targeting District
- Hydropower Project**
 - Operational Project
 - Under Construction
 - POA Project
 - MOU Project
 - No MOU Project
 - Reservoir
- Elevation (metre)**
 - < 100 m
 - 100 - 400 m
 - 400 - 800 m
 - 800 - 1200 m
 - > 1200 m

Map Scale 1 : 750,000







Poverty Reduction Fund (PRF)

100% Hydropower Project



Legend

- City/Town
- County boundary
- Province boundary
- District boundary
- Village boundary
- National Road
- Road for 10 km/h width
- Hydroelectric potential (1000 KW, 5000 KW, 10000 KW)
- National grid
- Not set

Hydropower Project

- Operational Project
- Under Construction
- EPC Project
- MBO Project
- Not MBO Project
- Potential

PRF Funded Areas of 100% Hydropower Project

- 100% Funded Area of 100% Hydropower Project
- 50% Funded Area of 100% Hydropower Project
- 100% Funded Area of 100% Hydropower Project
- 50% Funded Area of 100% Hydropower Project
- Not Funded Area

Scale

1:100,000

1 cm = 1 km

North

North Arrow

Scale Bar

Notes:

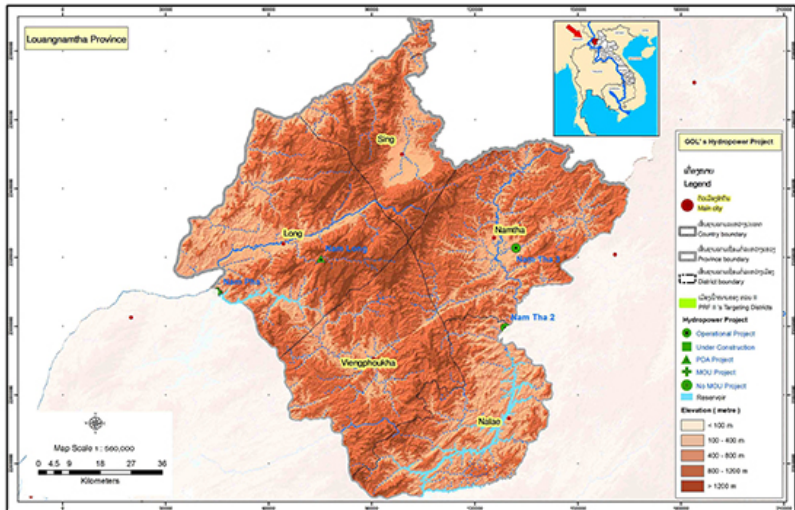
1. The map is prepared by the PRF Secretariat, Ministry of Economic Planning and Statistics, Government of Bhutan.

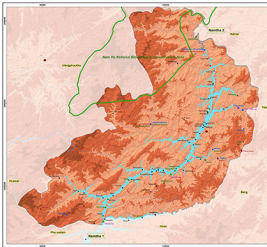
2. The map is prepared by the PRF Secretariat, Ministry of Economic Planning and Statistics, Government of Bhutan.

3. The map is prepared by the PRF Secretariat, Ministry of Economic Planning and Statistics, Government of Bhutan.

4. The map is prepared by the PRF Secretariat, Ministry of Economic Planning and Statistics, Government of Bhutan.

5. The map is prepared by the PRF Secretariat, Ministry of Economic Planning and Statistics, Government of Bhutan.







Poverty Reduction Fund (PRF)
M. Nalon Loangpananthe Province

DDC's Hydro-power Project



- **Waterfall**
- County boundary**
- Province boundary**
- Water boundary**
- DDC's Hydro-power Project**
- Waterway & stream**
- Waterfall**
- Waterway to water intake**
- Water intake, dam, dam wall, dam gate, spill way, dam outlet, dam road**
- Water intake**
- Canal**
- Water in the PFRF Project**
- Water intake project**
- 100% existing project in PFRF (1.5 MW)**
- 100% existing project in PFRF (1.5 MW)**
- 100% existing project in PFRF (1.5 MW)**

Partially new & 100% development project

- 10% total area of 100% development project**
- 10% total area of 100% development project**
- 10% total area of 100% development project**
- 100% development project**

Elevation (meter)

	0 - 100m
	100 - 200m
	200 - 300m
	300 - 400m
	400 - 500m
	500 - 600m
	600 - 700m
	700 - 800m
	800 - 900m
	900 - 1000m
	1000 - 1500m

Hydro-power Project

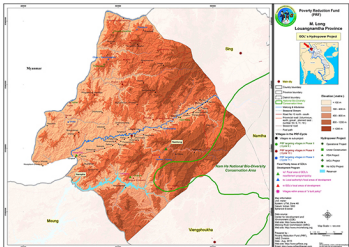
- Operation Project**
- Under Construction**
- Site Project**
- Water Project**
- Hydro Project**
- Reservoir**

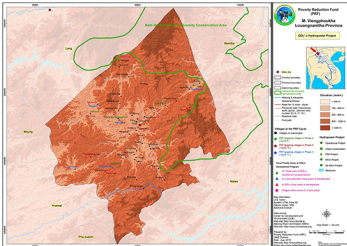
Map information:
 Scale: 1:50,000
 Datum: UTM Zone 48N
 Contour Interval: 100m
 Projection: UTM
 Prepared by: DDC/PRF Development and Management Unit
 Date: July 2015
 Contact: prf@ddc.gov.la
 Website: www.ddc.gov.la

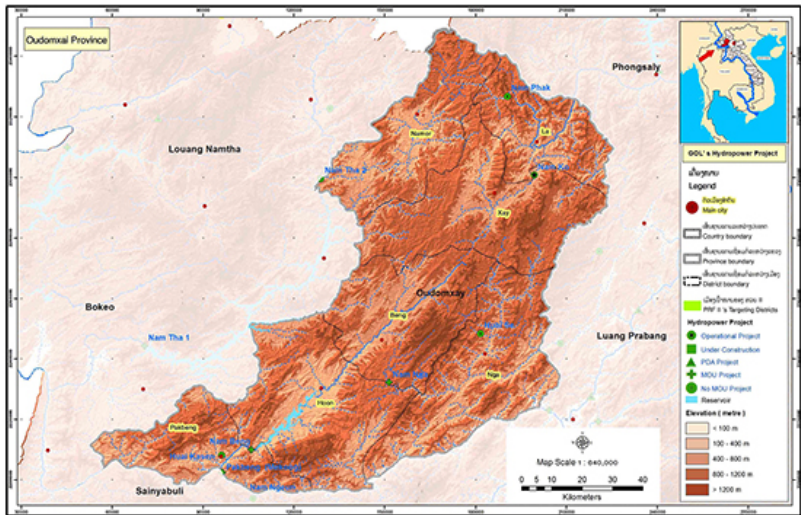


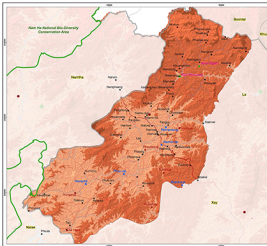
Map Scale: 1:50,000













Poverty Reduction Fund (PRF)

Mt. Kinabalu Biosphere Province

2007-2010 Program Project



Legend

Boundary	Elevation 0 - 100 m
Perimeter	Elevation 100 - 200 m
District	Elevation 200 - 300 m
National Kinabalu Conservation Area	Elevation 300 - 400 m
Kinabalu National Park	Elevation 400 - 500 m
National Forest Reserve	Elevation 500 - 600 m
Road for 10 km/hour	Elevation 600 - 700 m
Project area (including 2007-2010 PRF project area)	Elevation 700 - 800 m
National Park	Elevation 800 - 900 m
River	Elevation 900 - 1000 m

Project Types

Operational Project	Water Project
Water Conservation	Agro-Project
Water Project	Agro-Project
Water Project	Agro-Project
Water Project	Agro-Project
Water Project	Agro-Project
Water Project	Agro-Project
Water Project	Agro-Project

Other Symbols

Water Project	Water Project
Water Project	Water Project
Water Project	Water Project
Water Project	Water Project
Water Project	Water Project
Water Project	Water Project
Water Project	Water Project
Water Project	Water Project
Water Project	Water Project
Water Project	Water Project

Scale

1:50,000

1 cm = 500 m

1 inch = 12.5 km

1 mile = 1.6 km

1 km = 0.62 mile

1 mile = 1.6 km

1 km = 0.62 mile

Map Scale

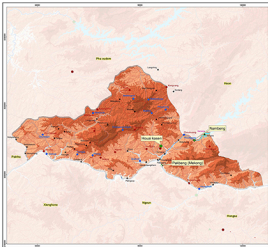
1:50,000

1 cm = 500 m

1 inch = 12.5 km

1 mile = 1.6 km

1 km = 0.62 mile

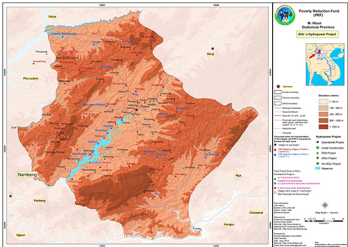


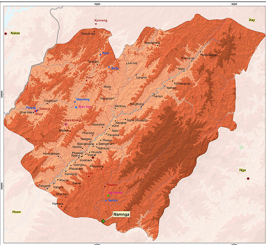
Poverty Reduction Fund (PRF)

Bhutan
Druknyem Province

100% Unconditional Project







Poverty Reduction Fund (PRF)

M. Bony Customised Province

SMM Implementation Project



City Names

State Boundaries

Province Boundaries

Planning Division

District Boundaries

Roads to Grade 1 Road

Highway (National Road)

International

Thailand

Laos

China

India



Project Types and Status
 Green: Approved and Implemented
 Yellow: Approved and Under Construction
 Red: Approved and Not Started
 Blue: Approved and Pending
 Purple: Approved and Cancelled
 Orange: Approved and Pending
 Pink: Approved and Pending
 Grey: Approved and Pending

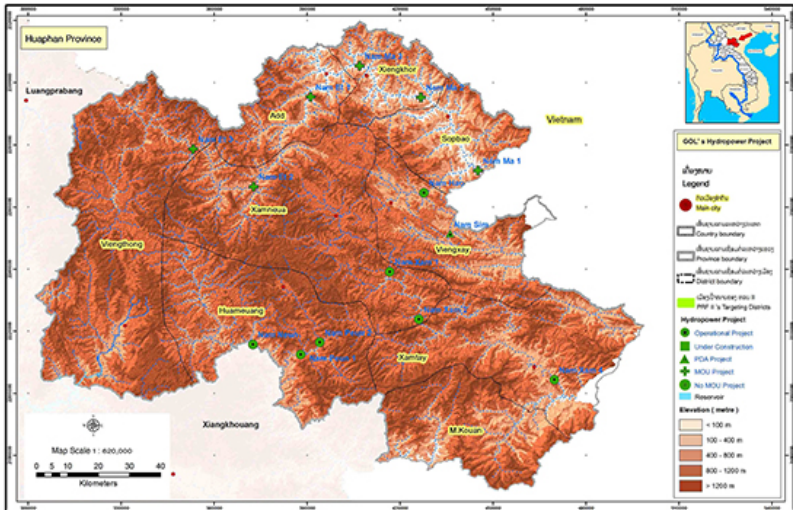


Scale: 1:100,000

Date: 2024

Author: PRF







Poverty Reduction Fund (PRF)

M. Xiengkhor
Huaphan Province

GOL's Hydropower Project



Elevation (meters)



Main city



Country boundary



Province boundary



District boundary



National Bio-Diversity Conservation Area



Maining & tributaries



Seasonal stream



Road No 13 north - south



Provincial road (yellow, north, green) planned road (number 10, 5, 11, 18)



Seasonal road



Foot path



Villages in the PRF-Cycle



Villages in sub-project



PRF targeting villages in Phase I (Cycle I)



PRF targeting villages in Phase II (Cycle II)



PRF targeting villages in Phase III (Cycle III)



Hydropower Project



Operational Project



Under Construction



FOA Project



No MOU Project



Reservoir



Point Priority Area of GOL's Development Program



PRF Focus area of GOL's investment programming



Local authority's focal area of development



GOL's focal area of development



Villages within areas of 'full policy'



Map information

Scale: 1:100,000

Scale: 1:100,000

Scale: 1:100,000

Scale: 1:100,000

Scale: 1:100,000

Scale: 1:100,000

Scale: 1:100,000

Scale: 1:100,000

Scale: 1:100,000

Scale: 1:100,000

Scale: 1:100,000

Scale: 1:100,000

Scale: 1:100,000

Scale: 1:100,000

Scale: 1:100,000

Scale: 1:100,000

Scale: 1:100,000

Scale: 1:100,000



Map Scale 1 : 100,000



Kilometers

Map source

Map source

Map source

Map source

Map source

Map source

Map source

Map source

Map source

Map source

Map source

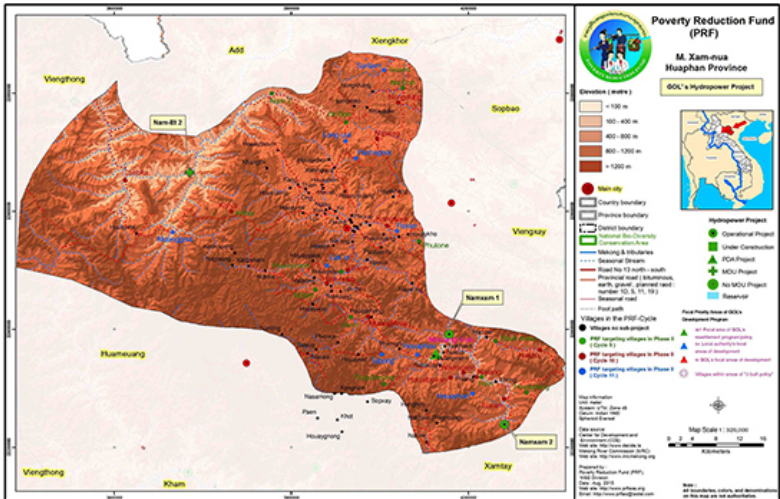
Map source

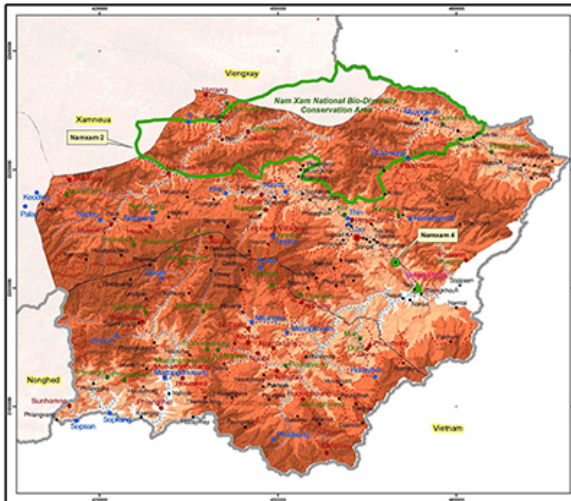
Map source

Map source

Map source

Note:
All boundaries, colors, and denominations on this map are not authoritative.





Poverty Reduction Fund (PRF)

M. Kam-tai Huaphan Province

GOV's Hydropower Project

Elevation (meters)



Main city

Country boundary

Province boundary

District boundary

National Bio-Diversity Conservation Area

Making & Villages

Seasonal Stream

Road No 13 north - south

Provincial road (bitumen, earth, gravel, planned road number 10, 5, 11, 19)

Seasonal road

Foot path

Villages in the PRF-Cycle

Villages not sub-project

PRF targeting villages in Phase 1 (Cycle 1)

PRF targeting villages in Phase 2 (Cycle 10)

PRF targeting villages in Phase 3 (Cycle 11)

PRF targeting villages in Phase 4 (Cycle 12)



Hydropower Project

Operational Project

Under Construction

FGA Project

MOU Project

No MOU Project

Reservoir

PRF Priority Area of SOA's Development Program

- All PRF areas of SOA's development program are in local authority local areas of development
- in SOA's local area of development
- Villages within area of SOA's local authority

Map information

Scale: 1:100,000

Scale: 1:100,000

Scale: 1:100,000

Scale: 1:100,000

Scale: 1:100,000

Scale: 1:100,000

Scale: 1:100,000

Scale: 1:100,000

Scale: 1:100,000

Scale: 1:100,000

Scale: 1:100,000

Scale: 1:100,000

Scale: 1:100,000

Scale: 1:100,000

Scale: 1:100,000

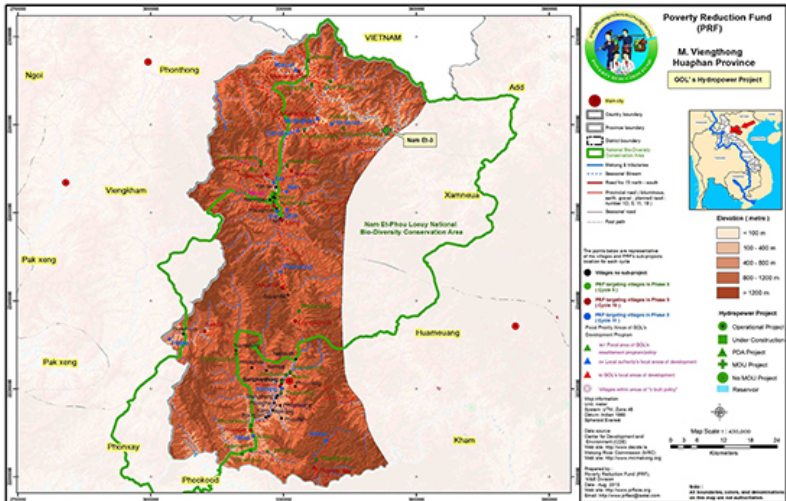
Scale: 1:100,000

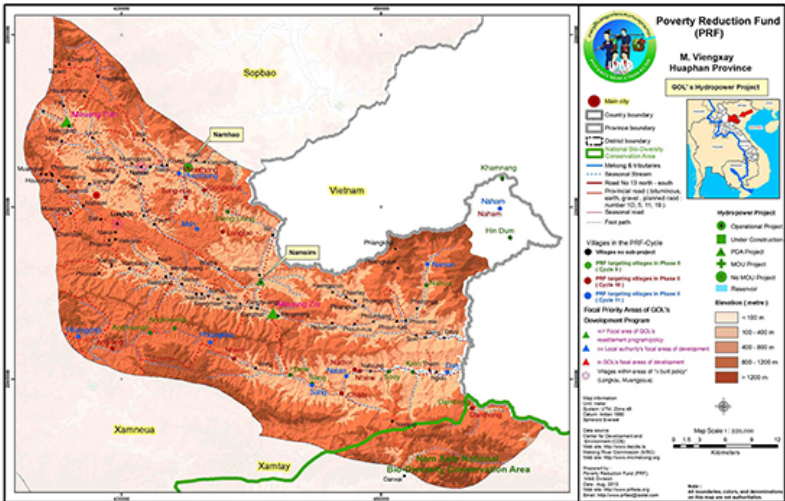


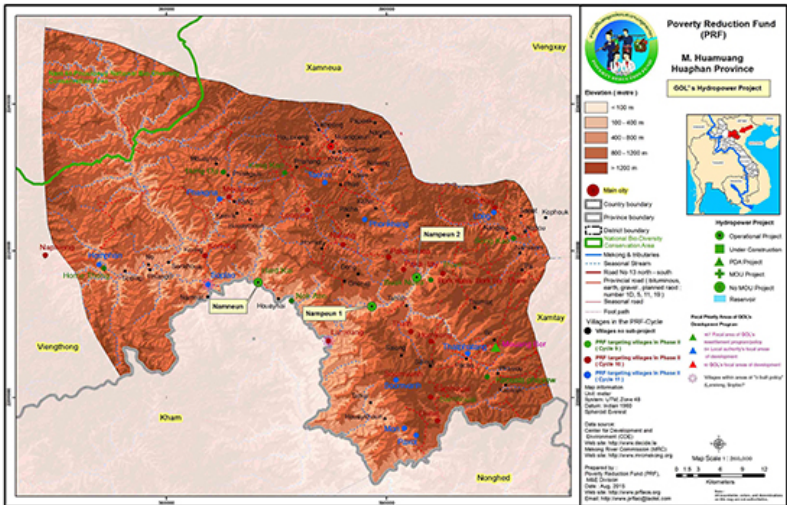
Note: All coordinates, colors, and descriptions on this map are not authoritative.

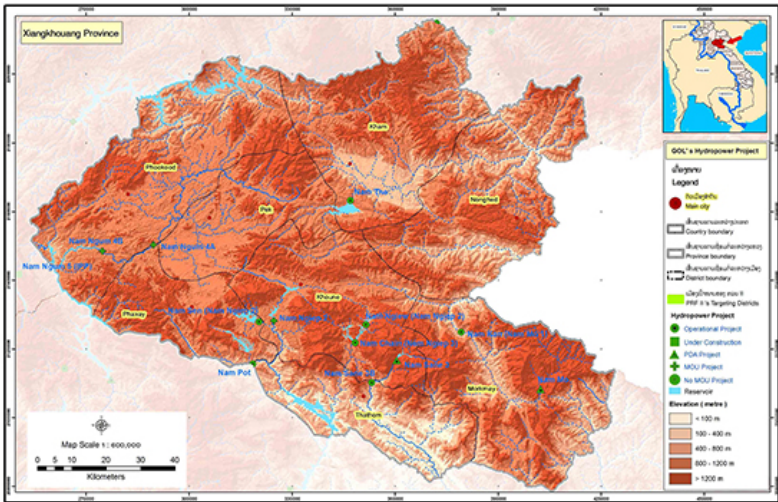
Data source:
Center for Development and
Economic (CDE)
This site: <http://www.cde.la>
Ministry of Natural Resources
Ministry of Natural Resources (MNR)
This site: <http://www.mnr.gov.la>

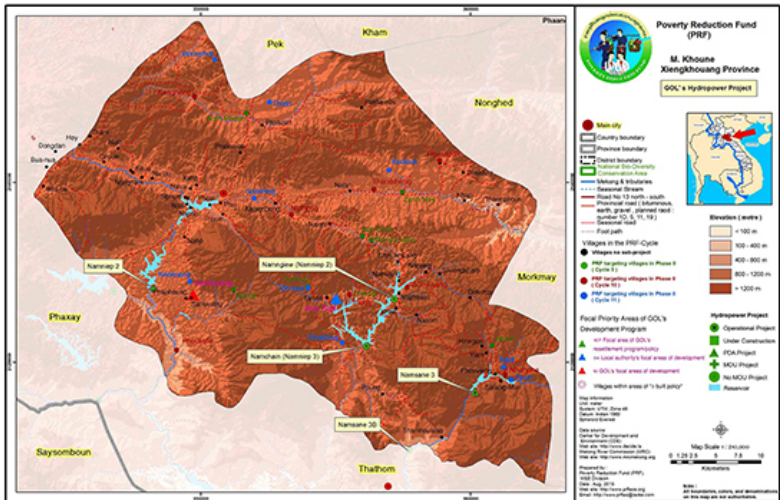
Prepared by:
Poverty Reduction Fund (PRF),
Road Sector
Date: Jan 2014
This site: <http://www.prf.gov.la>
Email: prf@prf.gov.la

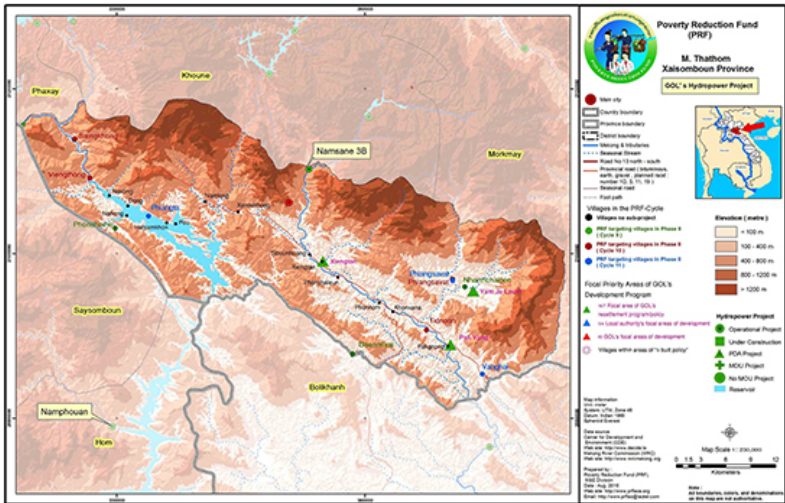


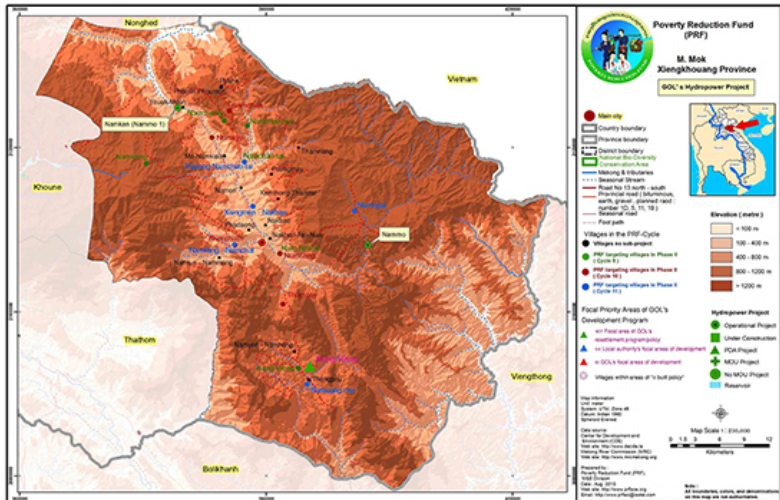


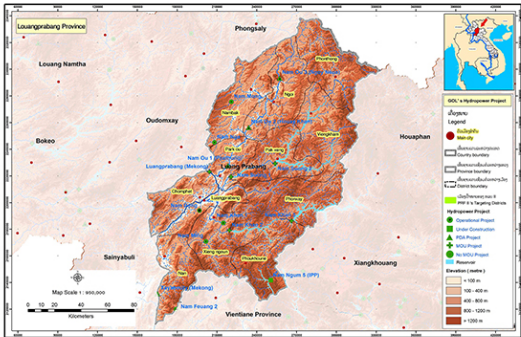


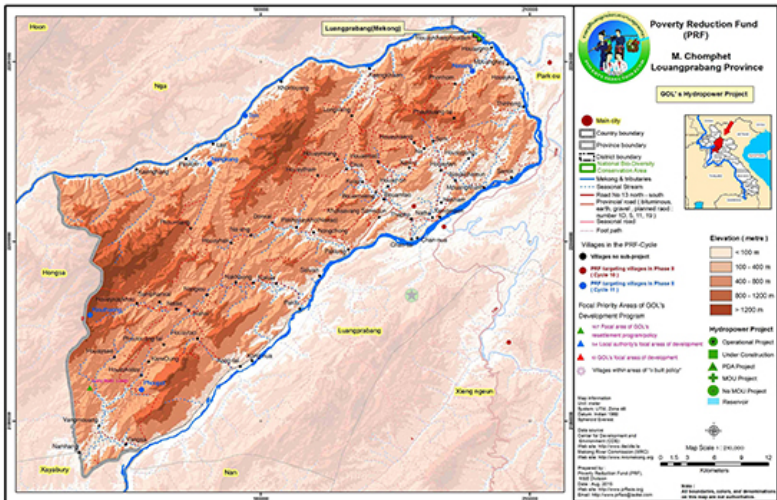














Poverty Reduction Fund
(PRF)

M. Nambak
Louangprabang Province

GOL's Hydropower Project



- Main city
- ▭ Country boundary
- ▭ Province boundary
- ▭ District boundary
- Irrigation & Waterfalls
- Seasonal Stream
- Road No 13 route - south
- Provincial road (Subdivided north, south, planned road number 12, 5, 11, 19)
- Seasonal road
- Foot path

Villages in the PRF-Cycle

- Villages no subproject
- PRF targeting villages in Phase II (Cycle 10)
- PRF targeting villages in Phase II (Cycle 11)

Focal Priority Areas of GOL's Development Program

- ▲ in Focal area of GOL's resettlement program/policy
- ▲ in Local authority's focal areas of development
- ▲ in GOL's focal areas of development
- ▲ Villages within areas of "huff-puff" (no subproject/road, Non-sustainable) (see map)

Source: PRF, Data as of October 2010
Revised October 2010

Prepared by:
Poverty Reduction Fund (PRF),
road (Dresser)
Date: Aug 2010
Map site: <http://www.prfdresser.org>
Email: map@www.prfdresser.org

Elevation (metre)

- < 100 m
- 100 - 400 m
- 400 - 800 m
- 800 - 1200 m
- > 1200 m

Hydropower Project

- Operational Project
- Under Construction
- ▲ POA Project
- MOU Project
- No MOU Project
- Reservoir



Note:
All boundaries, colors, and denominations on this map are for information only.



Poverty Reduction Fund (PRF)
B. Palang Lowland Project

SRP's Subproject Paper



- Legend**
- County boundary
 - Province boundary
 - District boundary
 - Waterway (streams)
 - Water stream
 - Road (to 100 meter scale)
 - Administrative boundaries (with project location and SRP's Subproject Paper)
 - Water canal
 - Canal
- | Location (elevation) | Color |
|----------------------|---------------|
| < 100 m | Lightest tan |
| 101 - 199 m | Light tan |
| 200 - 299 m | Medium tan |
| 300 - 399 m | Dark tan |
| 400 - 499 m | Dark brown |
| > 500 m | Darkest brown |

- The symbols below are representative of SRP's village and SRP's local village treatment unit (LUT)**
- Village to be advanced
 - SRP's existing village in Phase 1 (SRP's)
 - SRP's existing village in Phase 2 (SRP's)
 - SRP's existing village in Phase 3 (SRP's)
 - SRP's existing village in Phase 4 (SRP's)
 - SRP's existing village in Phase 5 (SRP's)
 - SRP's existing village in Phase 6 (SRP's)
 - SRP's existing village in Phase 7 (SRP's)
 - SRP's existing village in Phase 8 (SRP's)
 - SRP's existing village in Phase 9 (SRP's)
 - SRP's existing village in Phase 10 (SRP's)
- Five Priority areas of SRP's Subproject Paper**
- SRP's existing SRP's Subproject Paper
 - SRP's existing SRP's Subproject Paper
 - SRP's existing SRP's Subproject Paper
 - SRP's existing SRP's Subproject Paper
 - SRP's existing SRP's Subproject Paper

- Five Priority areas of SRP's Subproject Paper**
- SRP's existing SRP's Subproject Paper
 - SRP's existing SRP's Subproject Paper
 - SRP's existing SRP's Subproject Paper
 - SRP's existing SRP's Subproject Paper
 - SRP's existing SRP's Subproject Paper

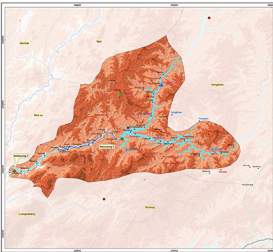


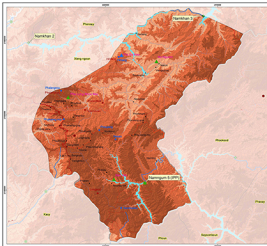
Author:
 National Development Planning Agency (BAPPENAS)

Editor:
 National Development Planning Agency (BAPPENAS)

Copyright:
 2010

ISBN:
 978-979-610-100-0





Poverty Reduction Fund (PRF)

M. Pinohutane, Luwengrabung Province

PRF's Implementation Project

City Name

- Province boundary
- Regency boundary
- District boundary
- Water & Wetland
- Seasonal Stream
- Main RR (1st class road)
- Provincial road (including RR, 2nd, 3rd, 4th class road)
- National Road
- Local Road

Standard Elevation

- < 100 m
- 101 - 200 m
- 201 - 300 m
- 301 - 400 m
- 401 - 500 m
- > 500 m

Village in the PRF region

- PRF in advanced
- PRF 4
- PRF 3

Priority Area of PRF Implementation Project

- PRF in low area of PRF
- PRF in low area of PRF
- PRF in low area of PRF
- PRF in low area of PRF
- PRF in low area of PRF

Implementation Project

- Operation Project
- Local Government
- PRF Project
- PRF Project
- PRF Project
- PRF Project
- PRF Project

Other Information

PRF 2017
 PRF 2018
 PRF 2019
 PRF 2020
 PRF 2021

Scale

1:100,000

Source

PRF 2017, 2018, 2019, 2020, 2021
 PRF 2017, 2018, 2019, 2020, 2021
 PRF 2017, 2018, 2019, 2020, 2021
 PRF 2017, 2018, 2019, 2020, 2021

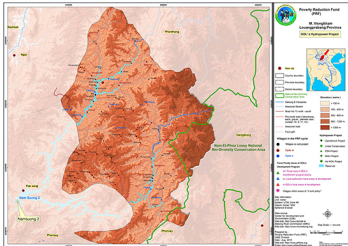
Prepared by

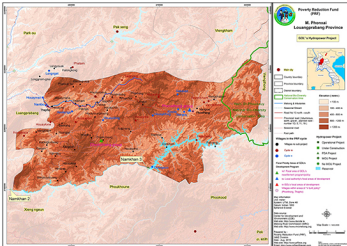
PRF 2017, 2018, 2019, 2020, 2021
 PRF 2017, 2018, 2019, 2020, 2021
 PRF 2017, 2018, 2019, 2020, 2021
 PRF 2017, 2018, 2019, 2020, 2021

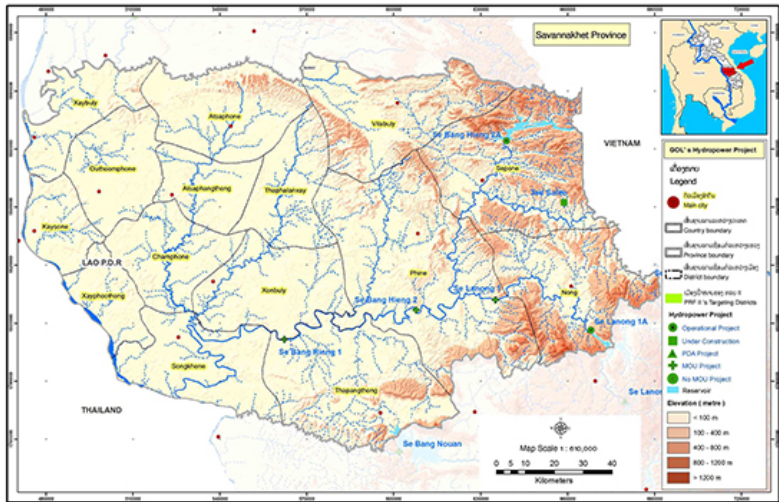
Map Scale

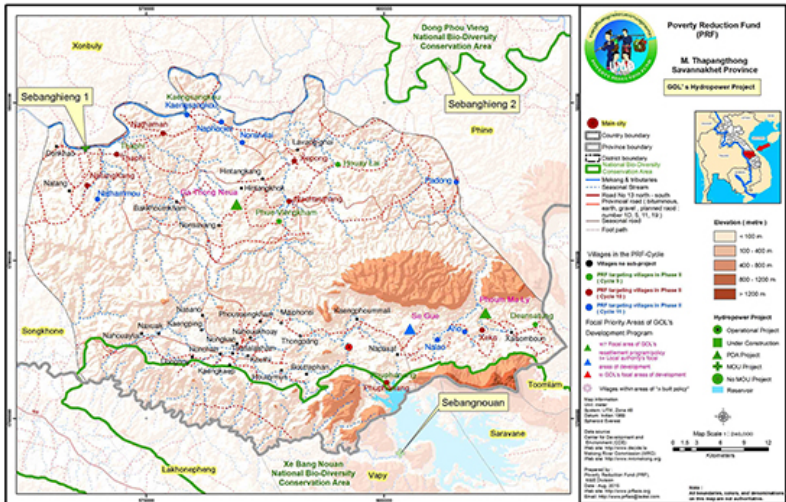
1:100,000

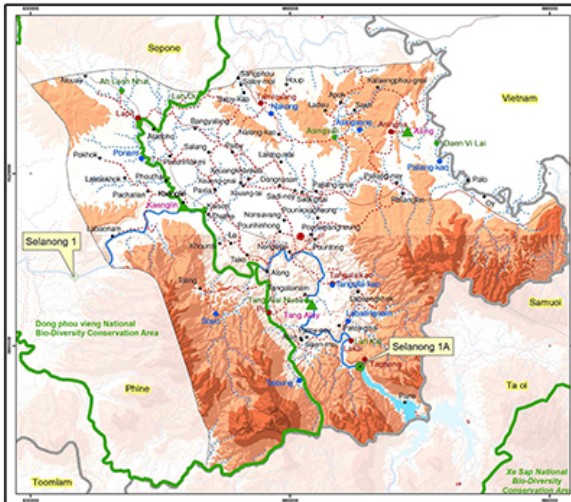
North Arrow











Poverty Reduction Fund (PRF)

M. Nong Savannakhet Province

GOL's Hydropower Project



- Main city
- County boundary
- Province boundary
- District boundary
- National Bio-Diversity Conservation Area
- National & Villagers
- Seasonal Stream
- Road No.13 north - south
- Provincial road (bitumenous, earth, gravel, planned road)
- Provincial road (number 10, 5, 11, 14)
- International road
- Foot path

The points below are representative of the villages and PRF's sub-projects location for each cycle

- Villages no sub-project
- PRF targeting villages in Phase I (Cycle I)
- PRF targeting villages in Phase II (Cycle II)
- PRF targeting villages in Phase III (Cycle III)

Focal Priority Areas of GOL's Development Program

- ▲ all focal area of GOL's resettlement programming
- ▲ all local authority's focal areas of development
- ▲ all GOL's focal areas of development
- ▲ Villages within area of "no built policy"

Map information
 Unit: Meter
 System: UTM, Zone 48
 Datum: Indian 1960
 Reference: Everest

Data source
 Center for Development and Resilience (CDR)
 Map site: <http://www.dsdcc.gov.la>
 Working River Commission (WRC)
 Map site: <http://www.wrc.gov.la>

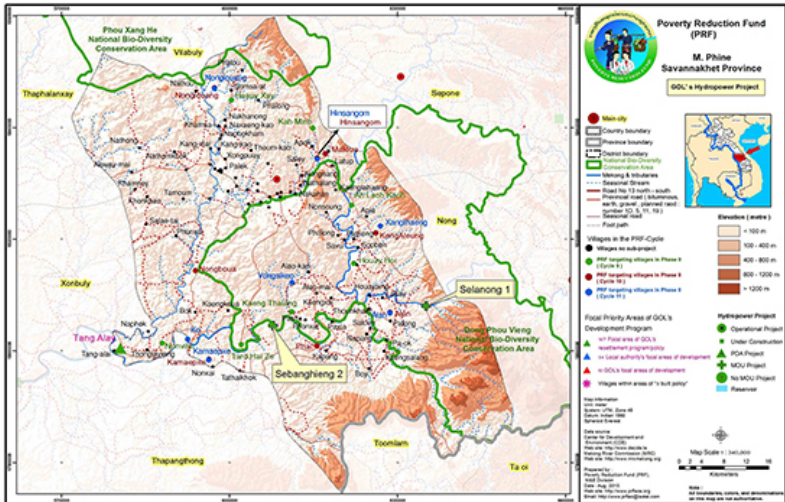
Prepared by:
 Poverty Reduction Fund (PRF),
 road team
 Date: Aug. 2010
 Map site: <http://www.prf.org.la>
 Email: map_team.prf@unicef.org

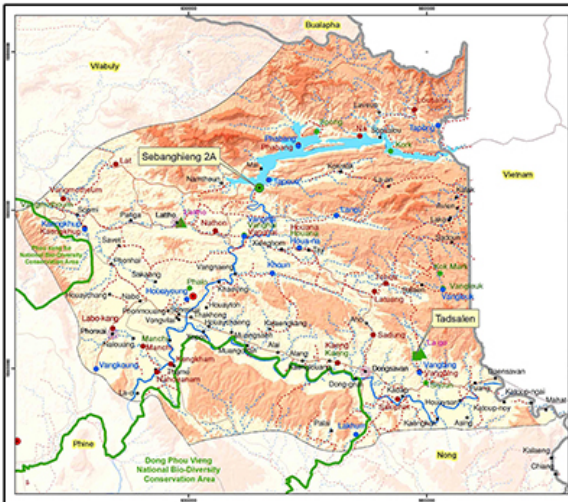


- #### Hydropower Project
- Operational Project
 - ▲ Under Construction
 - ▲ ECA Project
 - ▲ MOU Project
 - No MOU Project
 - Reservoir



Note:
 All boundaries, labels, and demarcations on this map are not authoritative.





Poverty Reduction Fund (PRF)

M. Sepon
Savannakhet Province

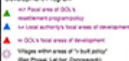
GDL's Hydropower Project



The points below are representative of the villages and PRF's sub-projects location for each cycle.



Focal Priority Areas of GDL's Development Program



Map information

Map system: UTM, Zone 48
Datum: Indian 1960
Sphere: Everest

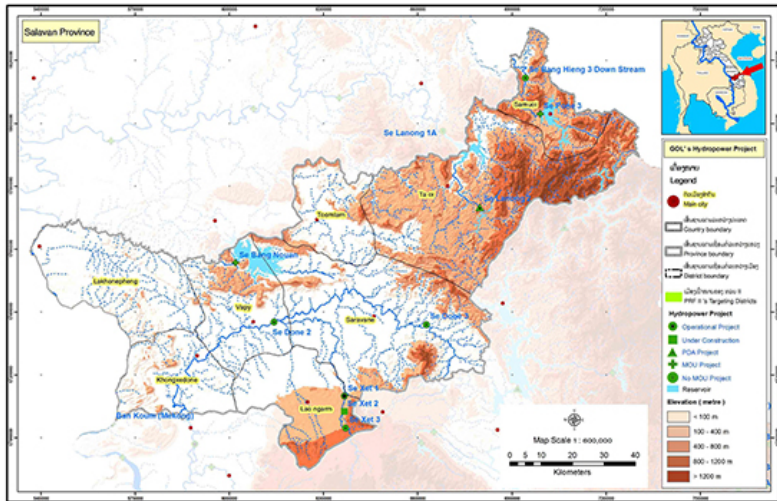
Data source:

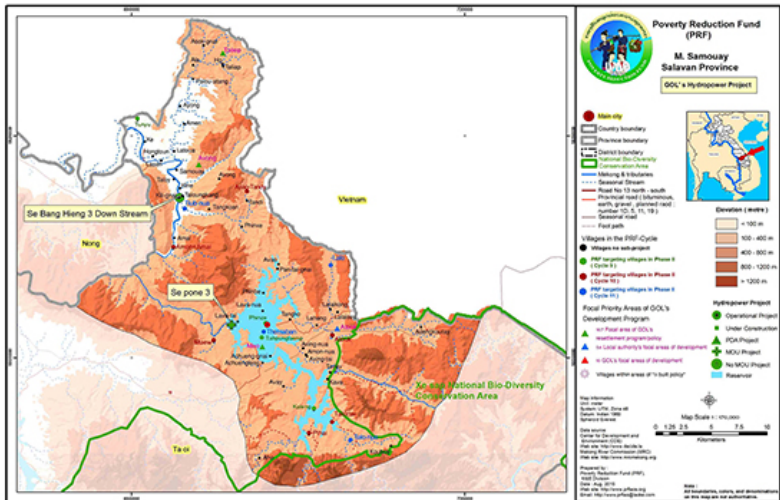
Center for Development and
Accountability (CDA)
Map site: <http://www.cda.la>
Mekong River Commission (MRC)
Map site: <http://www.mekong.org>

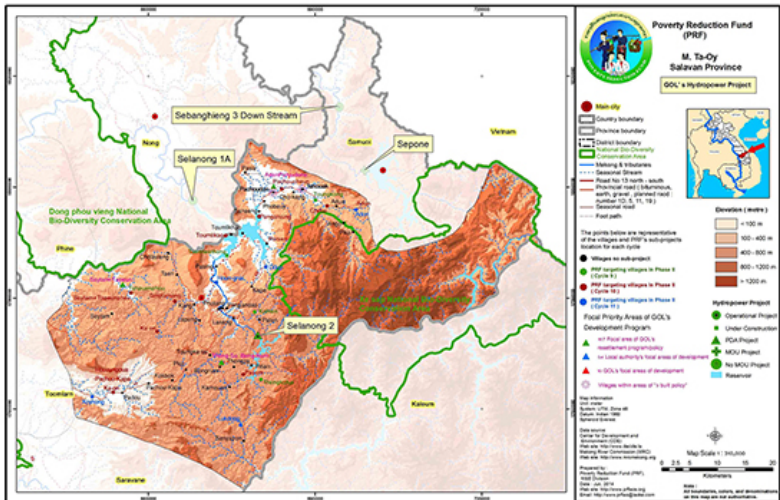
Prepared by:
Poverty Reduction Fund (PRF),
Mekong Region
Cycle I, 2005
Map site: <http://www.prf.la>
Email: info@www.prf.la



Note:
All boundaries, colors, and descriptions on this map are not authoritative.







Poverty Reduction Fund (PRF)

M. Ts-Oy Salavan Province

GOL's Hydropower Project



- Main city
- ▭ Country boundary
- ▭ Province boundary
- ▭ District boundary
- ▭ National Bio-Diversity Conservation Area
- ▭ Conservation Area
- Milling & tributaries
- Seasonal Stream
- Road No. 13 north-south
- Provincial road (bituminous, earth, gravel, planned road: number 10, 5, 11, 12)
- Seasonal road
- Foot path

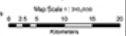
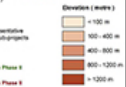
- The points below are representative of the villages and PRF's sub-projects location for each cycle
- Villages no sub-project
 - PRF targeting villages in Phase I (Cycle I)
 - PRF targeting villages in Phase II (Cycle II)
 - PRF targeting villages in Phase III (Cycle III)

- Focal Priority Areas of GOL's Development Program
- ▲ at Focal area of GOL's watershed propensity
 - ▲ for Local authority's focal areas of development
 - ▲ in GOL's focal areas of development
 - Villages within areas of 'a built policy'
- Hydropower Project
- Operational Project
 - Under Construction
 - ▲ PGA Project
 - ▲ MOU Project
 - No MOU Project
 - Reservoir

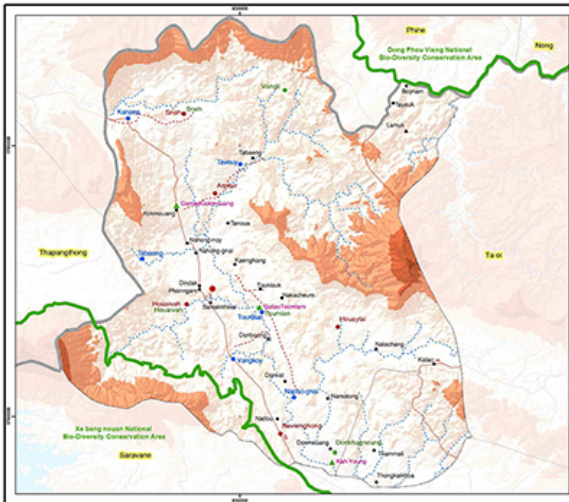
Map information
 Unit: meter
 System: UTM, Zone 48
 Datum: Indian 1960
 Projection: UTM

Date issue
 Center for Development and
 Governance (CDG)
 Map site: http://www.cdg.gov.mm
 Planning and Research Commission (PRC)
 Map site: http://www.prc.gov.mm

Prepared by:
 Poverty Reduction Fund (PRF),
 ADB (Japan)
 Date: Jan 2008
 Map site: http://www.prf.gov.mm
 Email: http://www.prf.gov.mm



Note:
 All boundaries, cities, and place names are for information only and do not represent the official position of the map maker or the Government of Myanmar.



Poverty Reduction Fund (PRF)

M. Toomian Salavan Province

GOL's Hydropower Project



- Main city
- ▭ Country boundary
- ▭ Province boundary
- ▭ District boundary
- ▭ National Bio-Diversity Conservation Area
- Mekong & tributaries
- Seasonal Stream
- Road for 13 north-south
- Provincial road (bituminous, earth, gravel, planned road: number 10, 5, 11, 18)
- Seasonal road
- Foot path

The points below are representative of the villages and PRF's sub-projects location for each cycle

- Villages not sub-project
- PRF targeting villages in Phase I (Cycle 1)
- PRF targeting villages in Phase II (Cycle 10)
- PRF targeting villages in Phase III (Cycle 11)

Focal Priority Areas of GOL's Development Program

- ▲ in Focal area of GOL's development program
- ▲ in Local authority's focal area of development
- ▲ in GOL's focal area of development
- Villages within area of 'to build policy'

Elevation (metre)

- = 100 m
- = 100 - 400 m
- = 400 - 800 m
- = 800 - 1200 m
- = 1200 m

Hydropower Project

- Operational Project
- ▲ Under Construction
- ▲ FGA Project
- ▲ MOU Project
- No MOU Project
- Reservoir

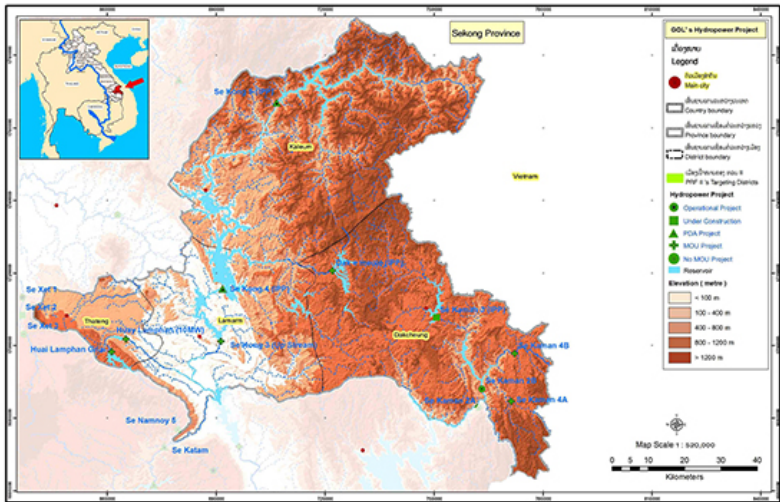
Map information
 unit: meter
 System: UTM, Zone 48
 Datum: Indian 1960
 Reference: Everest

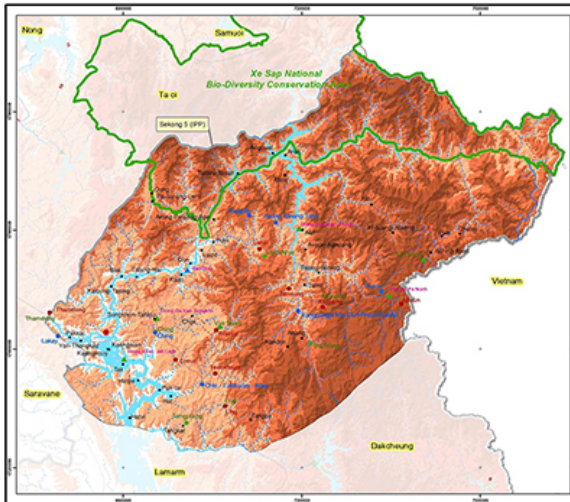
Data source:
 Centre for Development and Economic (CDE)
 Map site: <http://www.cde.lao>
 Mekong River Commission (MRC)
 Map site: <http://www.mekong.org>

Prepared by:
 Poverty Reduction Fund (PRF),
 road branch
 Date: Aug. 2010
 Map site: <http://www.prf.lao>
 Email: map@www.prf.lao



Note:
 All boundaries, colors, and denominations on this map are not authoritative.





Poverty Reduction Fund (PRF)

M. Kalum
Xekong Province

GOL's Hydropower Project



- Main city
- ▭ Country boundary
- ▭ Province boundary
- ▭ District boundary
- ▭ National Bio-Diversity Conservation Area
- Mekong & tributaries
- Seasonal Stream
- Road for 13 north-south
- Provincial road (bituminous, earth, gravel, planned road)
- Number 10, 5, 11, 18
- Seasonal road
- Foot path

- Villages in the PRF-Cycle
- Villages no exchange
- PRF targeting villages in Phase I (Cycle 1)
- PRF targeting villages in Phase II (Cycle 10)
- PRF targeting villages in Phase III (Cycle 11)

Focal Priority Areas of GOL's Development Program

- ▲ in Focal area of GOL's development program
- ▲ in Local authority's focal area of development
- ▲ in GOL's focal area of development
- Villages within area of "a-butt policy"

Elevation (metre)

- = 100 m
- 100 - 400 m
- 400 - 800 m
- 800 - 1200 m
- = 1200 m

Hydropower Project

- Operational Project
- Under Construction
- ▲ PDA Project
- ▲ MOU Project
- No MOU Project
- Reservoir

Map information

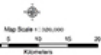
Unit: meter
System: UTM, Zone 48
Datum: Indian 1960
Datum's Source

Data source

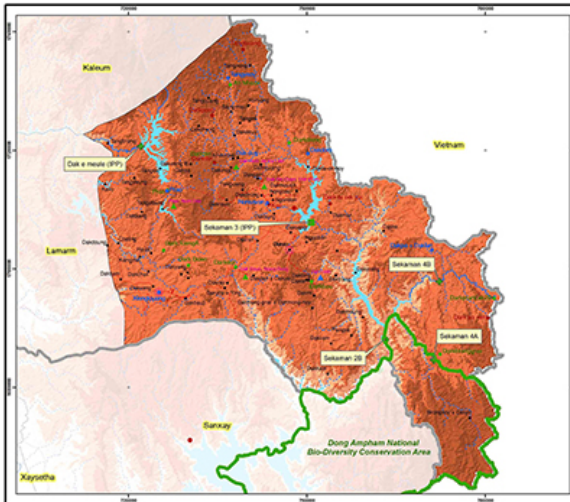
Center for Development and
Democracy (CDD)
PRF site information details
Mekong River Commission (MRC)
PRF site: <http://www.mekong.org>

Prepared by:

Poverty Reduction Fund (PRF),
WFP (Donor)
Date: Aug. 2010
PRF site information details
Email: prf@www.prf.org
Web: <http://www.prf.org/laos>



Note:
All boundaries, colors, and denominations
on this map are for information.



Poverty Reduction Fund (PRF)

M. Dakchung
Xekong Province

GOL's Hydropower Project



- **Non city**
- ▭ **Country boundary**
- ▭ **Province boundary**
- ▭ **District boundary**
- ▭ **PRF District boundary**
- ▭ **National Bio-Diversity Conservation Area**
- ▭ **Staking & Villages**
- ▭ **Seasonal Stream**
- ▭ **Road No 13 north-south**
- ▭ **Provincial road: substandard**
- ▭ **national road: planned road: number 10, 5, 11, 18**
- ▭ **Seasonal road**
- ▭ **Foot path**

- **Villages in the PRF-Cycle**
- **Villages no sub-project**
- **PRF targeting villages in Phase II (Cycle I)**
- **PRF targeting villages in Phase III (Cycle II)**
- **PRF targeting villages in Phase IV (Cycle III)**

- **Focal Priority Areas of GOL's Development Program**
- **in Focal area of GOL's investment programming**
- **in Local authority's focal areas of development**
- **in GOL's focal areas of development**
- **Villages within areas of "a bull priority"**
- **(B.Khangvay, B.Delom)**

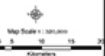
Map information
 Unit: meter
 System: UTM Zone 48
 Datum: Indian 1960
 Spheroid: Everest

Data source
 Center for Development and Economic (CDE)
 Web site: <http://www.cde.la>
 Working Paper Commission (WPC)
 Web site: <http://www.wpc.la>

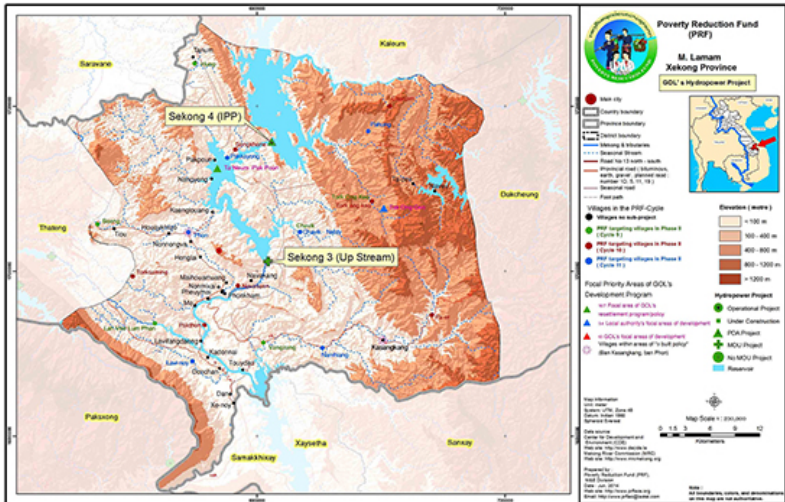
Prepared by
 Poverty Reduction Fund (PRF),
 WFP Group
 Date: Aug. 2012
 Web site: <http://www.prfa.org>
 Email: prf@prfa.org

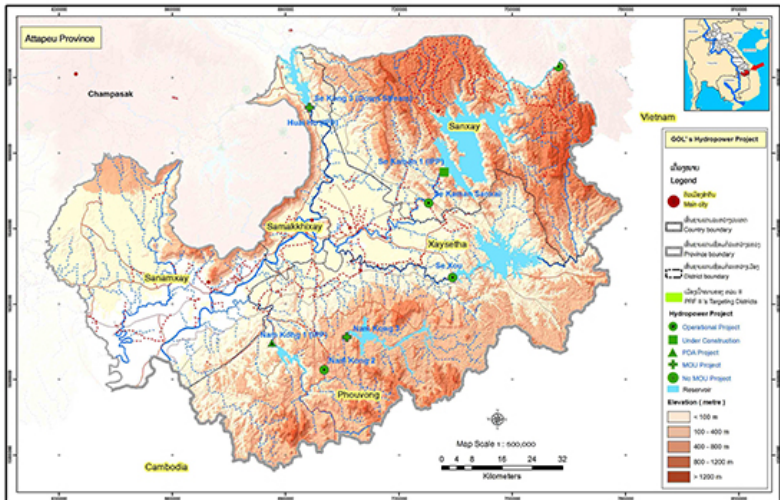


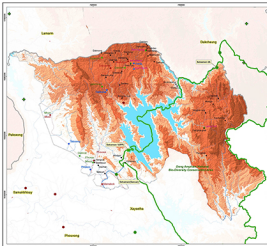
- **Hydropower Project**
- **Operational Project**
- **Under Construction**
- **PPA Project**
- **MOU Project**
- **No MOU Project**
- **Reservoir**



Note:
 All boundaries, colors, and denominations on this map are not authoritative.









Poverty Reduction Fund (PRF)

N. Kasul Alagar Project

GOI's Hydropower Project



<ul style="list-style-type: none"> City/Town District boundary State boundary Project boundary Major & minor roads State highway National highway State Capital District Capital State Capital District Capital 	<ul style="list-style-type: none"> Dam Project Dam Construction New Project Old Project Multi-Phase Multi-Phase Multi-Phase Multi-Phase Multi-Phase Multi-Phase
---	---

Elevation (m)

0 - 100
100 - 200
200 - 300
300 - 400
400 - 500
500 - 600
600 - 700
700 - 800
800 - 900
900 - 1000

Scale

1 cm = 1 km

1 inch = 16 km

1:100,000

North

North Arrow

Source

Topographic Survey of India

1:50,000 Scale

1:250,000 Scale

1:500,000 Scale

1:1,000,000 Scale

1:2,000,000 Scale

1:5,000,000 Scale

1:10,000,000 Scale

1:25,000,000 Scale

1:50,000,000 Scale

1:100,000,000 Scale

1:200,000,000 Scale

1:500,000,000 Scale

1:1,000,000,000 Scale

ມາຈາກຄວາມຕ້ອງການຂອງປະຊາຊົນ, ໂດຍປະຊາຊົນ

ແລະ ເພື່ອຕົນປະໂຫຍດຂອງປະຊາຊົນ

FROM THE PEOPLE, BY THE PEOPLE,
FOR THE PEOPLE

ສ້າງຕັ້ງຂຶ້ນໃນປີ 1986

ສະເໜີການເປັນສະມາຊິກ ແລະ ມີສ່ວນຮ່ວມງານກັບພວກເຮົາ

ສ້າງຕັ້ງ ຂຶ້ນ ກຸ່ມ

ຈະເປັນການໂຄ່ງ, ຈຳນວນສະມາຊິກ, ສ້າງຕັ້ງຂຶ້ນ

P.O. BOX 4025, VIENTIANE, LAOS

GOVERNMENT'S OFFICE

National Committee for Rural Development
& Poverty Eradication
POVERTY REDUCTION FUND

Manthabou Road,
Souravithai Village,
Chanthabouly District,
P.O. Box 4025,

T +856 821 261 479 / 262 480

F +856 821 261 481

E info@grf Laos.org

W www.grf Laos.org

ສະໜັບສະໜູນໂດຍ SUPPORTED BY

